
CORRECTION

The article, "A Novel Coal Fly Ash Sphere Reveals a Complete Understanding of Plerosphere Formation," published in the last issue of *The Microscope* (Vol. 59, Fourth Quarter 2011), pictured the wrong specimen for Figure 5D. The correct 5D image is included below with related images. *The Microscope* regrets the error.

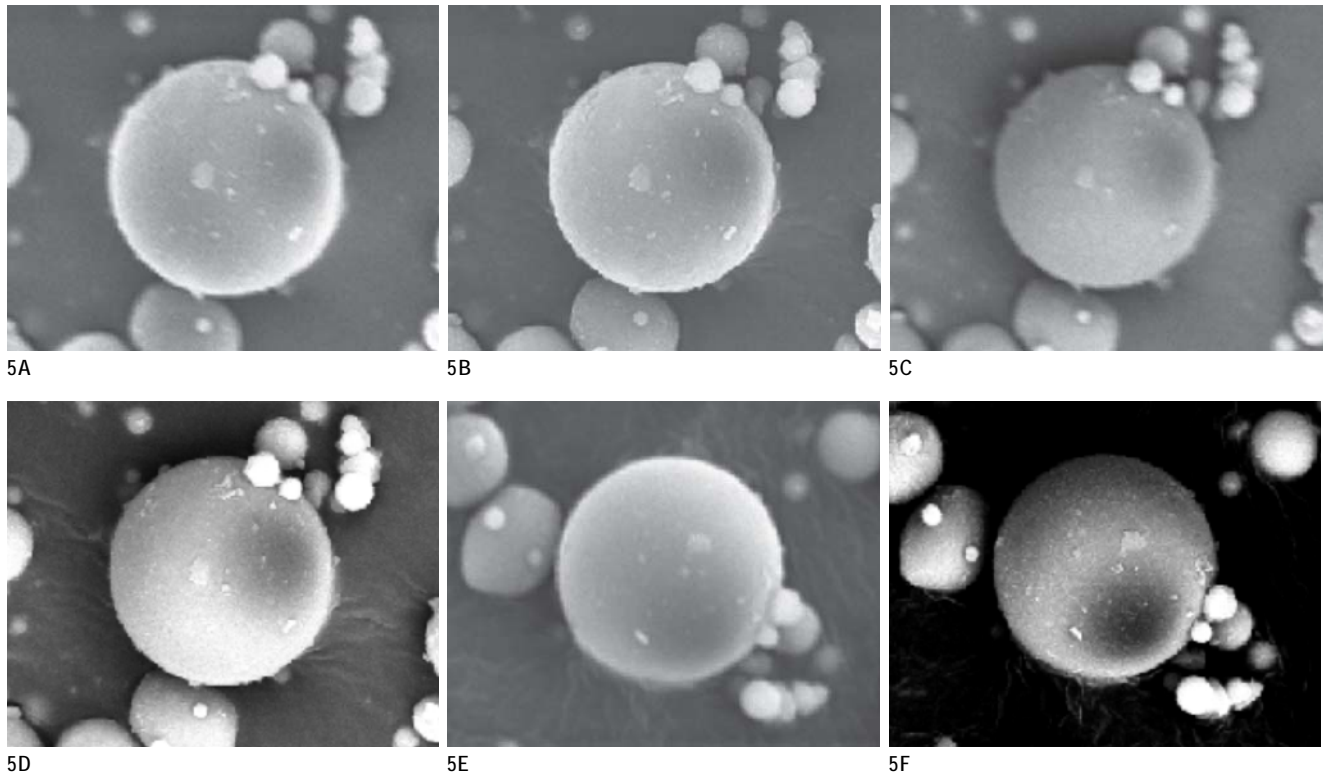


Figure 5. SEM images show the same 20 μm diameter thin-walled cenosphere at different accelerating voltages and image modes. 5A, secondary electron image (SEI) at 15 kV; 5B, SEI image at 20 kV; 5C, backscattered electron image (BEI) at 15 kV; 5D, BEI at 20 kV; 5E, SEI image at 20 kV, rotation = 90.047°, tilt = 15°; and 5F, BEI image at 20 kV, rotation = 90.047°, tilt = 15°.